

GENERAL TEMPORARY TRAFFIC CONTROL NOTES:

- IF THE TEMPORARY TRAFFIC CONTROL PLAN DOES NOT CONFORM TO THE CONTRACTOR'S METHOD OF OPERATION, SUBMIT A REVISED TEMPORARY TRAFFIC CONTROL PLAN FOR APPROVAL PRIOR TO THE BEGINNING OF CONSTRUCTION. THE ENGINEER REQUIRES 14 CALENDAR DAYS OF REVIEW TIME FOR THE SUBMITTED TRAFFIC CONTROL PLAN OR CHANGES MADE TO THE PLAN PROVIDED HEREIN.
- SPACE SIGNS A MINIMUM OF 500' APART.
- CONFORM ALL SIGNING MATERIAL TO ITD STANDARD SPECIFICATIONS SECTION 712. PLACE ALL SIGNS REMAINING UP FOR MORE THAN 3 DAYS IN ONE LOCATION ON GROUND MOUNTED WOOD POSTS (TREATED OR UNTREATED) PER ITD STANDARD DRAWING 616-10 OR ON METAL POSTS WITH MINIMUM 3' DRIVEABLE BASES IN COMPLIANCE WITH ITD STANDARD DRAWING 616-7. PROVIDE A MINIMUM 7-FOOT SPACE FROM BOTTOM OF SIGN TO GROUND SURFACE, AND PLACE EDGE OF SIGNS A MINIMUM OF 6-FOOT FROM EDGE OF ROADWAY. BACKFILL POST LOCATION WITH CLASS D COMPACTION AFTER REMOVAL, INCIDENTAL TO ITEM 626-010A.
- FOR ALL TEMPORARY TRAFFIC CONTROL OPERATIONS, WORK ZONE DEVICES, TAPER LENGTHS, AND THE PLACEMENT OF DEVICES, MEET OR EXCEED THE REQUIREMENTS OF THE MANUAL ON UNIFORM TRAFFIC CONTROL DEVICES (MUTCD) AS ADOPTED BY THE STATE, SECTION 105.14.D AND 626 OF THE STANDARD SPECIFICATIONS, THE QA MANUAL, AND ITD WORKZONE SAFETY AND MOBILITY PROGRAM.
- REMOVE OR COVER ALL EXISTING WARNING AND REGULATORY SIGNS IN CONFLICT WITH DETOUR SIGNING BY AN APPROVED METHOD WHILE DETOUR IS IN EFFECT. DO NOT DRILL HOLES IN SIGN PANELS THAT ARE COVERED. DAMAGED SIGNS SHALL BE REPLACED AT THE CONTRACTOR'S EXPENSE. BLACK PLASTIC COVERING IS NOT AN APPROVED METHOD.
- PLACE ALL DETOUR SIGNING AND TEMPORARY TRAFFIC CONTROL DEVICES PRIOR TO ANY DIVERSION OF TRAFFIC ONTO THE CONSTRUCTION DETOURS.
- ALL SIDE ROADS AND PRIVATE DRIVEWAYS SHALL REMAIN OPEN AND ACCESSIBLE DURING CONSTRUCTION UNLESS OTHERWISE SHOWN IN THE TEMPORARY TRAFFIC CONTROL PLANS. COORDINATE WITH PROPERTY OWNERS FOR DRIVEWAY CONSTRUCTION.
- ADDITIONAL SIGNING MAY BE REQUIRED AS DIRECTED.
- MONITOR TEMPORARY TRAFFIC CONTROL DEVICES AND PLACEMENT A MINIMUM OF TWICE DAILY TO ENSURE TEMPORARY TRAFFIC CONTROL MEASURES ARE OPERATING EFFECTIVELY AND ALL DEVICES USED ARE CLEARLY VISIBLE AND IN GOOD REPAIR. HAVE A CERTIFIED WORK SITE TRAFFIC CONTROL SUPERVISOR ON SITE TO DIRECT THE INSTALLATION AND MODIFICATION OF THE TRAFFIC CONTROL.
- MAINTAIN ALL ROUTE MARKER SIGNS DURING CONSTRUCTION.
- INSTALL PORTABLE CHANGEABLE MESSAGE SIGNS (PCMS) 500' IN ADVANCE OF THE WORK ZONE. PCMS SHALL BE INSTALLED 14 DAYS PRIOR TO ROAD CLOSURE, AND REMOVED ON THE FIRST DAY OF CLOSURE. SEE MESSAGING BELOW - COORDINATE MESSAGING WITH ENGINEER.

MESSAGE IN PLACE FOR 14 DAYS
PRIOR TO ROAD CLOSURE

BRIDGE
TO BE
CLOSED

DETOUR
BEGINS
XX/XX/XX

CONSTRUCTION PHASING

PHASE 1

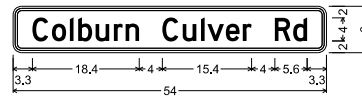
CONSTRUCTION

- REMOVE EXISTING BRIDGE AND CONSTRUCT PROPOSED BRIDGE.

TRAFFIC

- COLBURN CULVER ROAD BRIDGE WILL BE CLOSED TO TRAFFIC. SEE DETOUR PLAN.

SIGN DETAIL - W16-8P(o)



W16-8P(o)_VARx8:

1.5" Radius, 0.4" Border, 0.4" Indent, Black on Orange;

"Colburn Culver Rd", D 2K;

Table of Distances between letter and object feet

c	o	l	b	u	r	n	C	u	l	v	e	r	R	d		
3.3	3.4	3.1	1.4	3.0	3.2	2.0	6.3	3.5	3.2	1.1	3.2	2.9	5.5	3.2	2.4	3.3

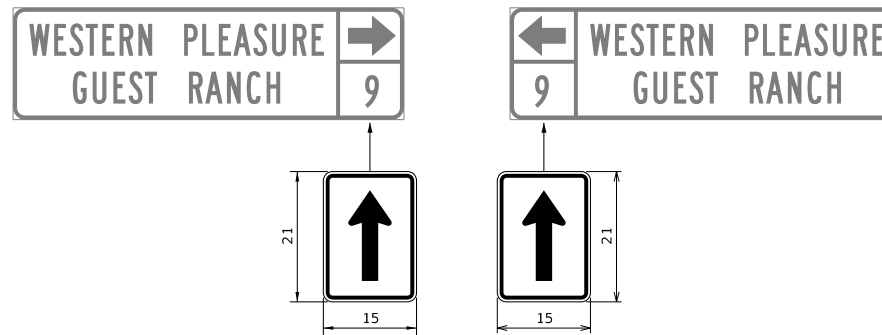
APPROXIMATE SIGNING QUANTITIES

SIGN	DESCRIPTION	CLASS	SIZE (WxH)	AREA (SF)	QUANTITY	TOTAL AREA (SF)
M4-4P	TRUCK	B	36" x 18"	4.5	17	76.5
M4-8P	DETOUR	B	30" x 15"	3.1	44	137.5
M4-8a	END DETOUR	B	24" x 18"	3.0	2	6.0
M4-10L	DETOUR ARROW (LEFT)	B	48" x 18"	6.0	1	6.0
M4-10R	DETOUR ARROW (RIGHT)	B	48" x 18"	6.0	1	6.0
M5-1PL(o)	ADVANCE TURN ARROW (LEFT)	B	30" x 21"	4.4	7	30.6
M5-1PR(o)	ADVANCE TURN ARROW (RIGHT)	B	30" x 21"	4.4	5	21.9
M6-1P(o)	ARROW	B	21" x 15"	2.2	2	4.4
M6-1PL(o)	LEFT ARROW	B	30" x 21"	4.4	7	30.6
M6-1PR(o)	RIGHT ARROW	B	30" x 21"	4.4	5	21.9
M6-3P(o)	UP ARROW	B	30" x 21"	4.4	20	87.5
R11-2	ROAD CLOSED	B	48" x 30"	10.0	2	20.0
R11-3b	BRIDGE OUT - LOCAL TRAFFIC ONLY	B	60" x 30"	12.5	2	25.0
W16-8P(o)	COLBURN CULVER RD	B	54" x 8"	3.0	54	162.0
W20-2	DETOUR AHEAD	B	48" x 48"	16.0	4	64.0
W20-3	ROAD CLOSED AHEAD	B	48" x 48"	16.0	4	64.0
W20-3	ROAD CLOSED 500 FT	B	48" x 48"	16.0	2	32.0
W20-3	ROAD CLOSED 1000 FT	B	48" x 48"	16.0	2	32.0
SUBTOTAL						827.9
CONTINGENCY (20%)						165.6
TOTAL						994

TEMPORARY TRAFFIC CONTROL BID ITEMS

ITEM NO.	DESCRIPTION	UNIT	QUANTITY
626-010A	TEMPORARY TRAFFIC CONTROL SIGNS	SF	994
626-040A	BARRICADE TYPE 3	EACH	6
626-105A	TEMPORARY TRAFFIC CONTROL MAINTENANCE	HR	430
626-115A	PORTABLE CHANGEABLE MESSAGE SIGN (PCMS)	DAY	28

SIGN DETAIL - M6-1P(o) MOUNTED TO EXISTING GUIDE SIGN



MOUNT SIGN VERTICALLY ON EXISTING SIGN COVERING MILEAGE AND ARROW. DO NOT COVER "WESTERN PLEASURE GUEST RANCH" LETTERING.

REVISIONS

NO.	DATE	BY	DESCRIPTION

DESIGNED	A. MCCUNE
DESIGN CHECKED	T. EMERSON
DETAILED	A. MCCUNE
DRAWING CHECKED	J. MCNEESE

SCALES SHOWN ARE FOR 11" X 17" PRINTS ONLY
CADD FILE NAME 30236 TTCP 001.SHT
DRAWING DATE: AUGUST 2025

BONNER COUNTY

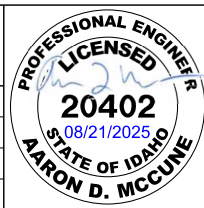


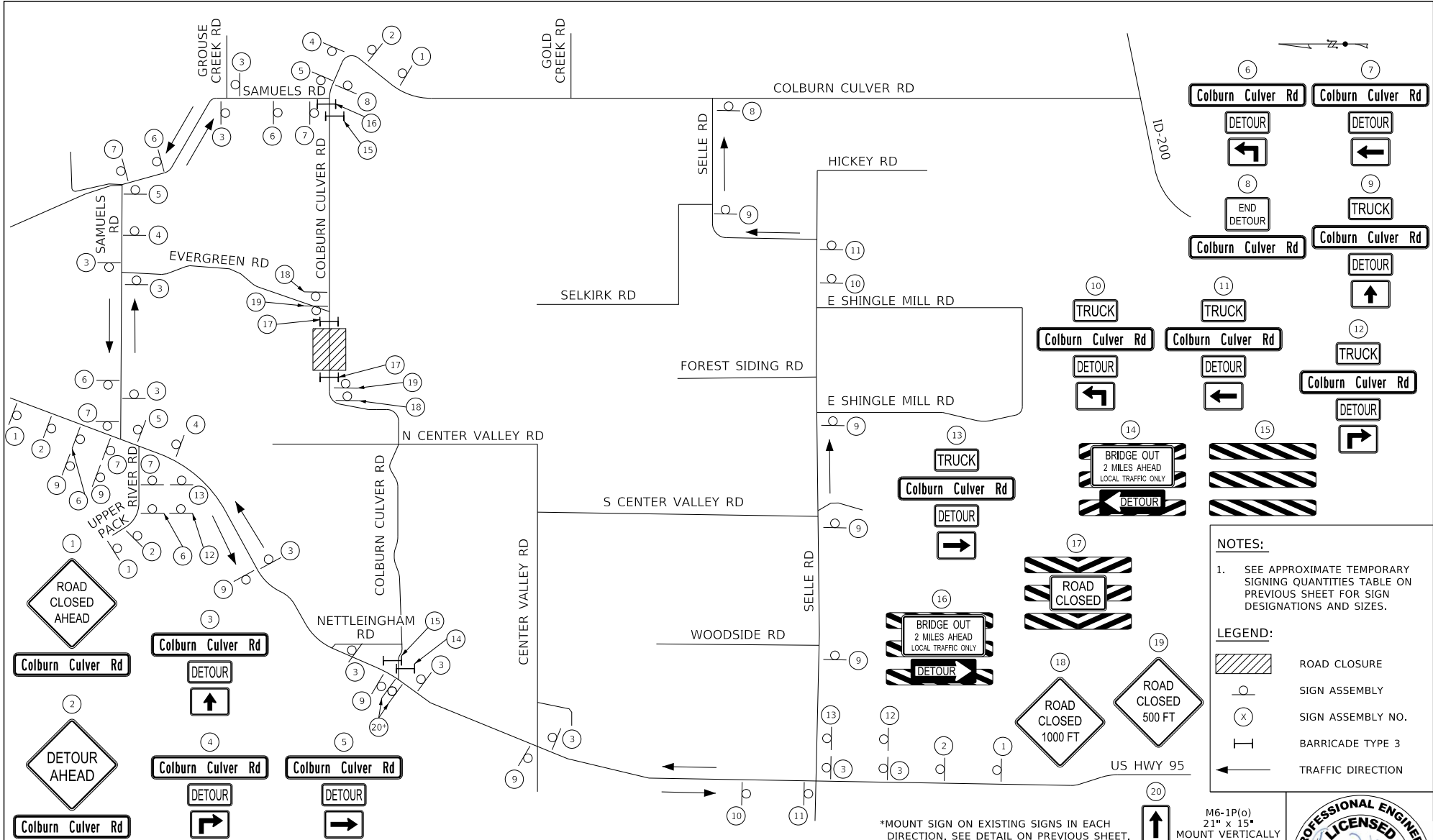
TEMPORARY TRAFFIC CONTROL PLAN
COLBURN CULVER ROAD OVER
PACK RIVER

GENERAL NOTES AND DETAILS

ENGLISH

COUNTY	BONNER
BRIDGE KEY NUMBER	30236
SHEET	19 OF 21





- NOTES:**
- SEE APPROXIMATE TEMPORARY SIGNING QUANTITIES TABLE ON PREVIOUS SHEET FOR SIGN DESIGNATIONS AND SIZES.
- LEGEND:**
- ROAD CLOSURE
 - SIGN ASSEMBLY
 - SIGN ASSEMBLY NO.
 - BARRICADE TYPE 3
 - TRAFFIC DIRECTION

*MOUNT SIGN ON EXISTING SIGNS IN EACH DIRECTION. SEE DETAIL ON PREVIOUS SHEET.

M6-1P(o)
21" x 15"
MOUNT VERTICALLY

REVISIONS			DESIGNED
NO.	DATE	BY	DESCRIPTION

DESIGNED	A. MCCUNE
DESIGN CHECKED	T. EMERSON
DETAILED	A. MCCUNE
DRAWING CHECKED	J. MCNEESE

SCALES SHOWN ARE FOR 11" X 17" PRINTS ONLY

CADD FILE NAME: 30236 TTCP 002.SHT

DRAWING DATE: AUGUST 2025

BONNER COUNTY

HDR



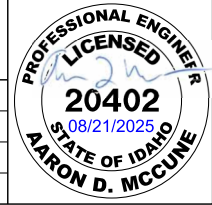
TEMPORARY TRAFFIC CONTROL PLAN
COLBURN CULVER ROAD OVER
PACK RIVER
DETOUR PLAN

ENGLISH

COUNTY: BONNER

BRIDGE KEY NUMBER: 30236

SHEET 20 OF 21



PLOTTED: 08/22/2025 3:37:28 PM
 FILENAME: C:\work\project\01\30236\2025\082125\TTCP_002.dwg